

Forum on commercial single-stream recycling



Omaha Area Higher Education Sustainability Alliance



WELCOME!

Housekeeping: we'll pick it up for you

Recycling

PLASTIC & METAL



Metal
Containers



Plastics
#1-7



Aluminum/
Tin

Compost

COMPOSTING



Food
Scraps



Paper
Plates, Cups
(hot & cold)



Napkins,
other Fibers

Landfill (limited)

LANDFILL WASTE



NO
Compostables



NO
Recyclables

THANK YOU!



Compostable Serving Ware



Composting & Recycling
Services



Food & Refreshments

AGENDA

1. Introductions
2. New commercial recycling standards
 - a) Where we are and how we got here
3. Q & A/Discussion
4. Future vision and opportunities
5. Hauler responses
6. Q & A/Discussion

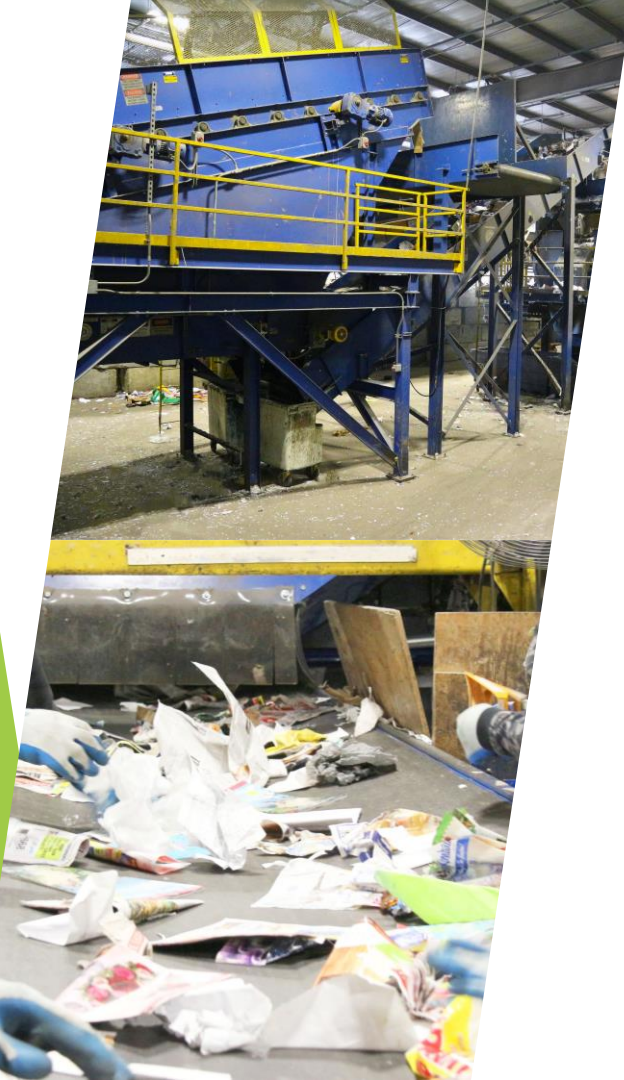
INTRODUCTIONS

1. Name
2. Organization
3. What question are you hoping to have answered today?



Challenges, Changes and OPPORTUNITIES to Commercial Recycling

Dale Gubbels, CEO,
Firststar Fiber, Inc.



About Firstar Fiber

- ▶ Largest mechanical MRF in Nebraska
- ▶ Processes businesses' and communities' recyclables from throughout the Midwest
- ▶ Employs over 130 people in our Omaha and Lincoln plants
- ▶ Value sensible waste management and always looking to expand and diversify the type of materials suitable for recovery
- ▶ First MRF to implement the Hefty® EnergyBag® program on a permanent basis

The Challenges

- ▶ Global market conditions have brought challenges for ALL USA recycling operations
- ▶ China now restricting virtually all imports of scrap material
- ▶ While Firststar has not been reliant on Chinese markets, those that were have moved to the domestic market
- ▶ Leading to:
 - ▶ Reduced market demand
 - ▶ Higher sensitivity to contamination
 - ▶ Historically low commodity prices



Officials in Britain and the West are scrambling to cop of plastics like this one in China. Beijing banned the ir recyclables on Jan.1.

FRED DUFOUR/AGENCE FRANCE-PRESSE &MDASH; GETTY IMAGE!

By Kimiko de Freytas-Tamura

Waste360 @Waste360 · 4h
#NeedToKnow Kent County, Mich., is considering doubling the rate of tipping fees at its sorting facility because it's suffering a \$1M shortfall from the low commodity prices and China's #waste import ban: bit.ly/2y2gS3q



RESOURCE RECYCLING
Your trusted source for recycling news and analysis

China's ban hits additional materials

Posted on April 24, 2018

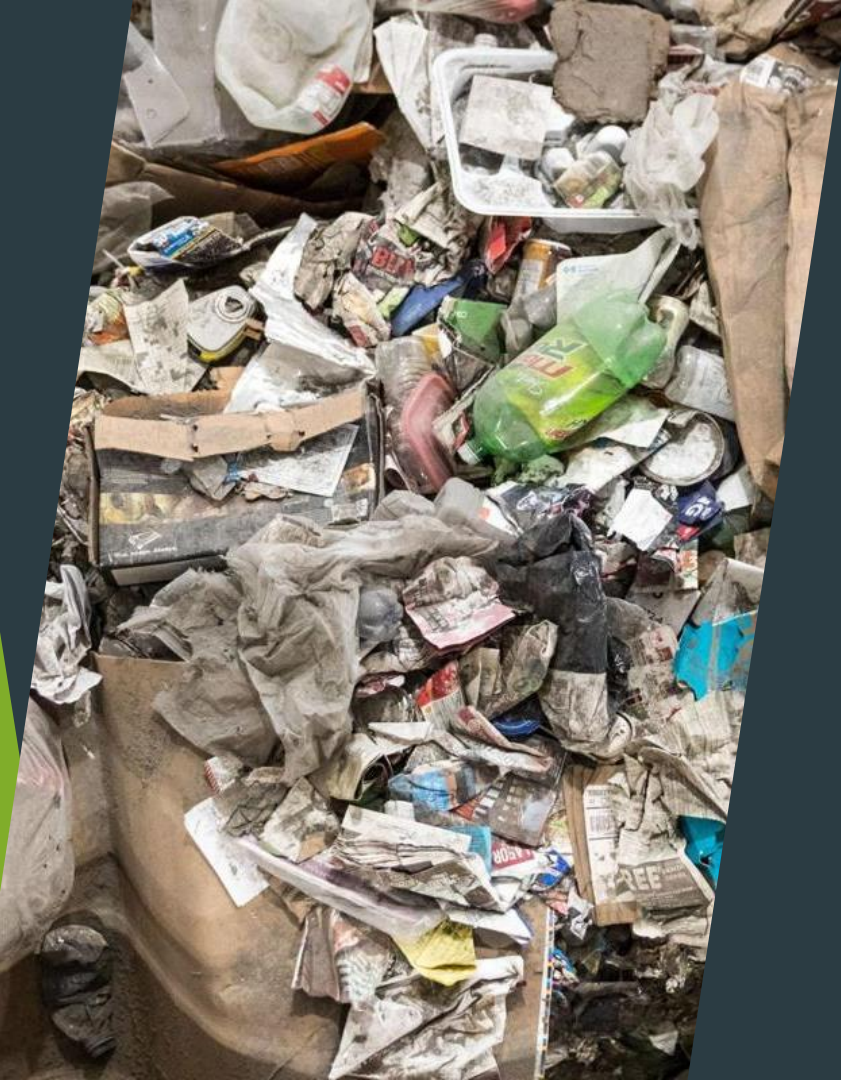
by Colin Staub

Chinese



halt imports of more scrap categories ar, including post-industrial scrap of scrap metals. The country also n more imports it will ban by the

ology and Environment (MEE) i set to recategorize post- d other scrap plastic as by the end of 2018,



Omaha's Commercial Recycling

- ▶ Mixed Commercial loads were resulting in contamination levels up to 40%
- ▶ **Contamination causes good materials to end up going to landfill**
- ▶ Higher processing costs
- ▶ Health & Safety risks to staff opening bags and removing contaminated materials

The Changes - Dual Stream Recycling

- ▶ Dual-Stream Recycling collects fiber products such as cardboard, separately from other mixed commingled recyclables (plastics, aluminum, tin, steel).
- ▶ Single-stream combines all loose (i.e., non-bagged) recyclable materials into the same bin.

SEPARATED



AT SOURCE



The Opportunity - Dual Stream

- ▶ Moving to a dual-stream recycling commercial program has many benefits:
 1. Lower levels of contamination
 2. Less otherwise recyclable material going to landfill from contamination
 3. Higher quality, more valuable recovered material enhances program sustainability
 4. Lower costs to process the collected recyclables
 5. Maximum financial benefit to the customer from recycling
 6. Supports American markets, manufacturers and the environment



Clean & Dry Cardboard

Please ensure all materials are loose and not contained within plastic bags:

- Cardboard Boxes
- Small amounts of office Paper and other fibers

If you do not generate much cardboard, such as an office only environment, please speak with your account representative as there may be alternative recycling solutions that are more appropriate.



Containers

Please ensure all materials are loose and not contained within plastic bags:

- #1 PET Containers such as pop/soda bottles
- #2 HDPE Containers such as milk jugs and detergent bottles
- #5 PP Containers such as yogurt tubs and margarine containers
- Smaller fiber materials such as office paper, newspaper, magazines
- Aseptic containers such as tetrapak, juice and long-life milk containers



Hefty® EnergyBag®

Please ensure all materials are contained within the Hefty® EnergyBag® and the bags are tied closed when full:

- Non-recyclable plastics from break rooms
- Foam to-go containers and coffee cups from conference rooms
- Plastic cups, plates, bowls and cutlery
- Chip and snack bags
- Plastic liners
- Packing peanuts
- Film plastics
- Flexible plastics
- Any other hard-to recycle plastic excluding PVC



How We Can Help Your Business

- ▶ We recognize every business is unique
- ▶ Our team of waste management specialists can work with you to ensure your waste and recyclables are being managed in the most economical and environmentally beneficial way possible.
- ▶ We provide free waste analysis and advice.
- ▶ Our marketing strength as the state's largest recycling operation and our unmatched track record of providing innovative solutions for customers can help your organization achieve its zero landfill goals.

First Star Recycling

www.firststarrecycling.com

Thank You!

OPTIONS FOR ORGANIZATIONS*

- 1 Stop recycling
- 2 Only recycle one stream (plastics/metals or fiber)
- 3 Change to dual streams (plastics/metals & fiber OR plastics/metals & composting which includes fibers)
- 4 Change to a triple stream (plastics/metals, fiber, & composting)

**Depending on your organization, your stream may still be considered single-stream. Work with your hauler and First Star for more information.*

Each option comes with different costs, risks, and opportunities

Soft Plastics Collection (Orange Bags) may play a role



GETTING THERE

CONSIDERATIONS

1 **Cost**

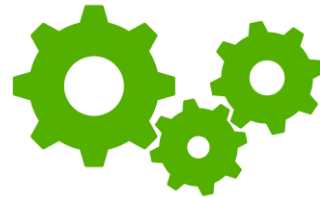
2 **Long-term waste and recycling goals**

- Best options for the short term vs. long term?

3 **Education**

4 **Space for new containers, dumpsters, etc.**

5 **Champions**



RISKS FOR ORGANIZATIONS



Negative feedback from public and staff

Recycling is often noted as a #1 concern for staff when considering their company's green initiatives



Reduced recycling



Cost increases



New or ongoing contamination issues

- Confusion on the new practices

OPPORTUNITIES FOR ORGANIZATIONS



Advancement towards Waste Reduction/Recycling Goals



Education: Opens the door for engagement



Improve recycling streams: Reduce contamination



More collaborative work with your hauler



Financial: Potential rebates

IT CAN BE DONE!

Lincoln's recent ban on cardboard from the landfill

City-wide education program to help with the transition of cardboard elimination from the landfill

- Education program included household outreach, marketing materials, site visits, and an educational website



RESOURCES FOR BUSINESSES



[More Business Resources](#) ↗

GRANT OPPORTUNITIES

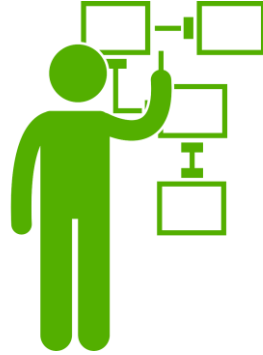
Grants may help pay for new recycling equipment like bins, signage, and external infrastructure.

Grant Name	Industry	Amount	Application Deadline
NRC Recycling Equipment Grants	Public and private entities	Up to \$20,000	15 th of Each Month
NET Grant	Public	No limit	First Tuesday after Labor Day (9/11/18)
NE DEQ Waste Reduction & Recycling Incentive Grant	Public, Private, Nonprofit	Approx. \$3.4 mil	Early 2019
NE DEQ Litter Reduction & Recycling Incentive Grant	Public and private entities	\$1.5 mil available	Early 2019

WHAT'S NEEDED NOW

Planning & Action

- Quick decisions
- Think short term and long term
- Work with your hauler



Education

- Transparency
- Communication
- Clear guidelines for staff and visitors



HAULER RESPONSES

Papillion | Waste Management | Hillside Solutions



Varies in size, industry, and may be eligible to continue single stream recycling.



Example: Abe's, Hillside Solutions, Waste Management, Papillion Sanitation



MRFs (Material Recovery Facility), First Star, Nebraskaland, CARE, etc.

Q&A AND DISCUSSION

Is any additional clarity needed on what can currently be recycled from your organization and in which stream?

What does your organization need to manage this transition?

What does this mean for commercial recycling long-term?



Omaha Area Higher Education Sustainability Alliance

Accelerating and expanding sustainability in Omaha